



PT. XUZHOU CONSTRUCTION MACHINERY GROUP

Heavy Equipment | Industrial Equipment | Marine Equipment

COMPANY PROFILE



ABOUT US

PT XUZHOU CONSTRUCTION MACHINERY GROUP is Indonesia's leading providers of shipyard & offshore, mining, oil & gas, engineering and other heavy equipments. We are located in Batam city and founded in 2013.

Along with the growth and highly demand of development machinery, we currently offers: Heavy equipment, such as: crawler crane, truck crane, excavator, wheel loader, bulldozer, etc.

Marine equipment, such as: winch , windlass, slewing crane,

generator, pump, etc.; and Industrial equipment, such as: welding machine, genset, CNC machine, overhead crane, etc.

PT XCMG provides over than 99 type of equipments and be able to support you with reliable BKI, CCS, ABS, NK, GL, BV, KR, LR, DNV certificates authorized by ship classification society, also third-party test of CE/SGS.

We are committed to provide only high quality of heavy machinery and excellent after sales services.

VISIONS:

- To be best service solution company.
- Become the first and only choice to provide customer's needs.
- Creating world class highly skilled teamwork.

MISSION:

- Give the best product and prices to customer.
- Fulfil the requirement of customer with the efficient and adjustable budget.
- Give an opportunity to Creative Team to develop the company and implement a good management system.

CRAWLER CRANE



XCG400



XCG130



XCG55



XCG500

Model	XCG55	XCG75	XCG85	XCG100	XCG130 (Cummins)	XCG150
Lifting Capacity (ton)	55	75	75	100	130	150
Boom Length (meter)	13-52	13-58	13-58	19-73	16-76	18-81
Fixed Boom Length (meter)	7-16	7-19	9-18	13-25	13-31	13-31
Rated Power/ Speed (kW/rpm)	128/2200	155/2000	200/1800	206/1950 (Euro III)	242/2100 (Euro III)	235/2100 (Euro III)

Model	XCG180 (Cummins)	XCG260 (Cummins)	XCG300 (Volvo)	XCG500 (Mercedes-Benz)
Lifting Capacity (ton)	180	260	300	500
Boom Length (meter)	19-82	24-93	18-96	24-96
Fixed Boom Length (meter)	13-31	12-36	24-60	24-84
Rated Power/ Speed (kW/rpm)	250/2100 (Euro III)	242/2100 (Euro III)	310/2100 (Euro III)	360/1800 (Euro III)

ROUGH TERRAIN CRANE



RT35



RT100



RT120U



RT200

Model	RT25 (Cummins)	RT55E (Cummins)	RT70E (Cummins)	RT90E
Lifting Capacity (ton)	25	55	70	90
Main Boom Length (meter)	30.8	37.9	43.3	19-73
Auxiliary Boom Length (meter)	10.6	15.1	14.8	13-25
Rated Power/ Speed (kW/rpm)	142/2100 (Euro III)	149/2100 (Euro III)	194/2100 (Euro III)	209/2100 (Euro III)

Model	RT120E (Cummins)	RT150E (Cummins)	RT200E (Cummins)
Lifting Capacity (ton)	120	150	200
Main Boom Length (meter)	48.2	62.3	62.3
Auxiliary Boom Length (meter)	19.1	17.7	17.7
Rated Power/ Speed (kW/rpm)	224/2100 (Euro III)	224/2100 (Euro III)	224/2100 (Euro III)

TRUCK CRANE



XCT16



XCT100



XCT25



XCT220

Model	XCT16	XCT25L5	XCT75	XCT100
Lifting Capacity (ton)	16	25	75	100
Fully Extended Boom (meter)	32	42	48	64
Fully Extended Jib (meter)	8.15	9	17	18.1
Rated Power/ Speed (kW/rpm)	192/2300	213/1900	268/1900	268/1900

Model	XCT130		XCT220	
Lifting Capacity (ton)	130		220	
Fully Extended Boom (meter)	60.7		61.4	
Fully Extended Jib (meter)	24.6		2	
Rated Power/ Speed (kW/rpm)	Superstructure	Carrier Engine	Superstructure	Carrier Engine
	Mercedes Benz	Cummins	Volvo	Mercedes Benz
	OM906LA.E3A	ISM11E4 440	TAD722VE	OM460LA.E3A
	190/2200	318/1900	194/2100	360/1800

TRUCK-MOUNTED CRANE



Telescopic Boom

Model	SQ2SK1Q	SQ4SK2Q	SQ6.3SK2Q	SQ8SK3Q	SQ10SK3Q	SQ12SK3Q	SQ16SK4Q
Max Lifting Capacity (kg)	2000	4000	6300	8000	12000	12000	16000
Length of Basic Boom (mm)	3400	3600	4100	4800	4850	5200	5400
Max Working Height (mm)	7500	8300	10500	13200	13500	14000	19300
Crane Weight (kg)	758	1229	2110	3300	4000	4200	6200
Installation Space (mm)	850	850	900	1200	1200	1300	1400
Rotation Angle (degree)	360 All Rotation						



Foldable Arm

Model	SQ3.2ZK1	SQ5ZK2	SQ8ZK3Q	SQ12ZK3Q	SQ14ZK3Q	SQ16ZK4Q	SQ25ZK6Q
Max Lifting Capacity (kg)	3200	5000	8000	12000	14000	16000	25000
Recommended Power (kw)	14	18	28	32	32	37	50
Oil Tank Capacity (liter)	60	90	160	160	220	250	300
Crane Weight (kg)	1100	2035	2970	4130	4468	5000	7945
Installation Space (mm)	850	1050	1150	1400	1400	1500	2500
Rotation Angle (degree)	360 All Rotation						

TOWER CRANE



Model

Arm Length/ Hoist Arm (M/T)

Rated Lifting Torque (Tm)

Maximum Weight (T)

Fixed Height (M)

Attachment Height (M)

QTZ63	QTZ80	QTZ125	QTZ280	XGA500	XGTL750II	XGTL1600	XGTL1800
50/1.1	56/1.0	60/1.5	60 / 3.6	80 / 4.0	60 / 6.0	76 / 6.0	71 / 7.0
63	80	125	280	500	500	1000	1600
5	6	10	13	25	50	100	100
34.4	40	60	51.7	79	52	61.2	61.2
160	140	197	180	278	196	196	84

OVERHEAD CRANE



European Series Single Girder

LH Electric Hoist

Product Type

Lifting Capacity (KG)

Span Length (M)

Operating Method

MC	LH	LDA	LD	EQD
80-3200	3000-32000	1000-32000	1000-32000	5000-320000
2-14	8-35	8-30	6-30	16-30
-	-	Pendant control, remote control or operating cabin.	Pendant control, remote control.	Pendant control, remote control or operating cabin.

EXCAVATOR



XE135B



XE900D



XE210W



XE40

Model	XE35U	XE55D	XE80D	XE135D	XE370	XE700D	XE900D
Bucket Capacity (m³)	0.11	0.2	0.33	0.32-0.61	1.4-1.8	2.4-4.6	3.5- 6.0
Operating Weight (kg)	4200	5700	7730	13200	36800	69000	89600
Rated Power (KW/rpm)	21.4 / 2400	36.2 / 2100	44.8 / 2200	86/2200	212/2000	336/1800	399/2100
Bucket Digging Force (KN)	27.6	48.3	57	99.1	263	363	480
Max. Reach (mm)	5415	6130	6245	8304	11114	11580	12330
Max. Digging Height (mm)	5215	5630	7120	8638	10445	11350	12060
Max. Digging Depth (mm)	3060	3830	4070	5546	7423	6900	7250

Model	XE35U	XE55D	XE80D	XE135D	XE370	XE700D	XE900D
Bucket Capacity (m³)	0.11	0.2	0.33	0.32-0.61	1.4-1.8	2.4-4.6	3.5- 6.0
Operating Weight (kg)	4200	5700	7730	13200	36800	69000	89600
Rated Power (KW/rpm)	21.4 / 2400	36.2 / 2100	44.8 / 2200	86/2200	212/2000	336/1800	399/2100
Bucket Digging Force (KN)	27.6	48.3	57	99.1	263	363	480
Max. Reach (mm)	5415	6130	6245	8304	11114	11580	12330
Max. Digging Height (mm)	5215	5630	7120	8638	10445	11350	12060
Max. Digging Depth (mm)	3060	3830	4070	5546	7423	6900	7250

WHEEL LOADER

LW160KV



LW900



LW600KV



LW400



LW1100

Model	LW160KV	LW300FV	LW400KV	LW600KV	LW700KV	LW800KN	LW1100KN
Rated Bucket Capacity (m³)	0.75	1.5-2.5	2.4	3.0-4.5	3.5	4.5	5.5
Rated Load (kg)	1400-1600	3000	4000	6000	7000	8000	11000
Rated Power (KW)	55	92	125	178	226	250	291
Total Weight (KN)	4850	10600 ± 200	14500	19700	23550	28500	35000
Dumping Height (mm)	2350-3000	2770-3260	2840	3170-3750	3168	3400	3450
Max. Breakout Force (kN)	45	130	120	205	210	260	290

Model	LW160KV	LW300FV	LW400KV	LW600KV	LW700KV	LW800KN	LW1100KN
Rated Bucket Capacity (m³)	0.75	1.5-2.5	2.4	3.0-4.5	3.5	4.5	5.5
Rated Load (kg)	1400-1600	3000	4000	6000	7000	8000	11000
Rated Power (KW)	55	92	125	178	226	250	291
Total Weight (KN)	4850	10600 ± 200	14500	19700	23550	28500	35000
Dumping Height (mm)	2350-3000	2770-3260	2840	3170-3750	3168	3400	3450
Max. Breakout Force (kN)	45	130	120	205	210	260	290



ROAD ROLLER



XS142J



XS143



XS333

Model	XMR303	XMR403	XD133VO	XS142J	XS162J	XS183	XS303	XS333
Max Operating Weight (kg)	3100	4100	13200	14000	16000	18000	30000	33000
Front Wheel Dist. Weight (kg)	1550	2050	6400	7300	8300	11500	18000	21000
Rear Distribution Weight (kg)	1550	2050	6800	6700	7700	6500	12000	12000
Rated Power (kW)	25	35.5	118	92	115	134	179	210
Steering Angle (degree)	30	30	± 35	± 33	± 33	± 33	± 33	± 33
Swing Angle (degree)	10	10	± 8	± 11	± 11	± 10	± 10	± 10

GRADER



GR100



GR300



GR215

Model	GR100	GR135C	GR165	GR180	GR215	GR260	GR300
Rated Power/ Speed (kW/rpm)	75/2400	110/2200	125/2200	138/2200	160/2200	194/2200	224/2100
Weight (kg)	7000	11000	15000	15400	16500	24000	26000
Ground Clearance (mm)	550	410	430	430	430	430	430
Max. Gradeability	≥25%	≥25%	≥25%	25%	≥25%	≥25%	≥25%
Max. Lifting Height Blade(mm)	28-70	54-90	28-70	28-70	28-70	28-70	28-70
Max. Depth of The Shovel Blade (mm)	60	360	360	360	360	360	360

AERIAL WORKING PLATFORM



Model	GKS22	GKS28	GKH30	GKS38	GKH40
Rated working height (M)	22.4	28	30	38.6	40.5
Boom telescoping time (s)	70	70	60	90	90
Platform Size (mm)	1800 × 900 × 1150	1800 × 900 × 1150	1800 × 900 × 1150	1800 × 900 × 1150	1800 × 900 × 1150
Rated contained mass (kg)	230	150	150	150	150
Rated power (kW/rpm)	45/2200	63/2600	63/2600	63/2600	63/2600

DIESEL ENGINE FORKLIFT



CPCD50



CPCD60

Model	CPCD20	CPCD25	CPCD30	CPCD50	CPCD60	CPCD70	CPCD80	CPCD100
Rated Capacity (kg)	2000	2500	3000	5000	6000	7000	8000	10000
Overall Max. Lifting Height (mm)	3995	3995	4227	4360	4350	4345	4360	4085
Lifting Speed (with Load) (mm/s)	530	530	440	520	520	510	440	360
Service Mass (kg)	3320	3680	4270	7980	8640	9350	10960	12510
Rated Power (kW/rpm)Engine	34.4/2400	34.4/2400	36.5/2600	82/2200	82/2200	82/2200	82/2200	82/2200
Brand Engine	Kubota, NISSAN, ISUZU, CUMMINS, PERKINS, MITSUBISHI							



INDUSTRIAL & MARINE GENSET



HEFER
HFI30S

Model	Rated Power
CUMMINS	20 – 2500 KVA
PERKINS	8 – 2250 KVA
YANMAR	6 – 68 KVA
ISUZU	20 – 125 KVA
MITSUBISHI	10 – 38 KVA (SMALL) 750 – 2250 KVA (BIG)
KUBOTA	7 – 30 KVA
DOOSAN	60 – 680 KVA
VOLVO	80 – 550 KVA
MTU	275 – 3125 KVA
LIGHT TOWER	4 X 1000 WATT

PROPULSION ENGINE

Model	Rated Power
CUMMINS	122 – 1825 HP
YUCHAI	40 – 1100 HP



CUMMINS
HFC625S



PERKINS
HFP100



CUMMINS
HFC1250



DIESEL PORTABLE SCREW AIR COMPRESSOR



LGCY-12/10



LGCY-22/20

Model	LGCY-6/7	LGCY-9/7	LGCY-10/7	LGCY-12/12	LGCY-12/12	LGCY-13/17	LGCY-22/20	LGCY-27/20
Capacity m ³ /min (cfm)	6(212)	9(318)	10(353)	12(424)	12(424)	13(459)	22(777)	27(953)
Pressure Bar (Psi)	7(102)	7(102)	7(102)	12(174)	12(174)	17(247)	20(290)	20(290)
Power (KW/HP)	70/95	58/80	70/85	118/160	118/160	158/215	239/325	295/395
Rated RPM (r/min)	2500	2100	2000	1800	1800	1800	1800	1800
Weight (Kg)	1400	1850	1900	2380	2380	3400	4500	4850

LAUNCHING AIR BAG



PNEUMATIC FENDER



AIRBAG

Application:

Ship launching marine airbags are used for ship launching, ship landing, ship lifting, loading, and floating. They are widely used in cargo boat launching and landing, lifting and moving sunken ships, and salvaging stranded boats. Marine airbags have the benefit of not only saving labor and time, but investment costs. Additionally they are flexible and dependable.

1. Ship launching, lifting and refloating
2. Floating bridge and dock construction
3. Rescue and remove of wrecked ship
4. Can be used as pontoons for supporting docks and other floating structure

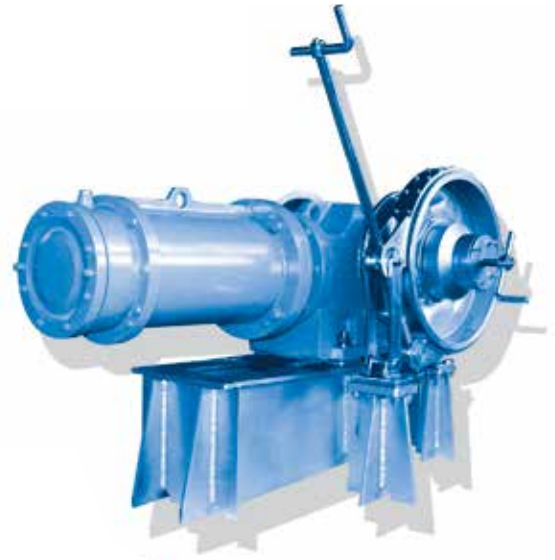
Standard specifications:

Diameter (D)	: 0.8m - 2.4m
Effective Length (EL)	: 5.0m - 20.0m
Total Length (TL)	: 6.0m - 21.5m
Standard Number of Layers	: 3-10 layers
Loading Capacity	: About 10-40 T/M



Marine Crane

Working Load: 10-100 KN



Light Windlass

Stainless steel, aesthetic shapes, small volume, convenient layout, Applies to all kinds of official boat and yachts.

RAM TYPE HIDRAULIC STEERING GEAR



Steering Gear

Manual

Ratio Torque:

0.5-10 kNm

Range of Use:

Mainly used in yachts, river boats, barges, working boats, transport boats and other small vessels with steering torque smaller than 16 kNm.

Feature:

Steering light, aesthetic shapes, layout compact.

Ram Type Hydraulic

Drive type:

2 Electric motor pump station or 1 Electric motor pump station + shaft driven pump.

Ratio Torque:

75-600 kNm

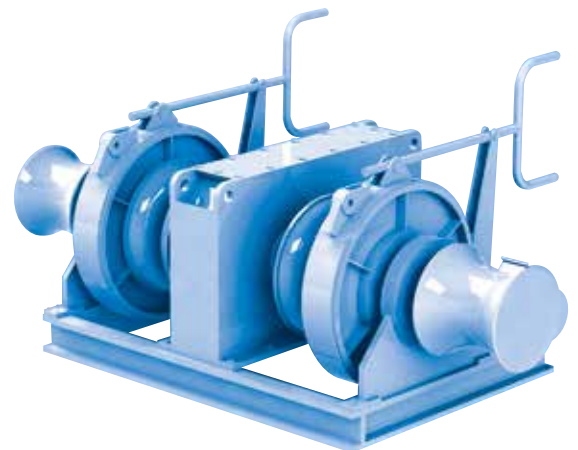
Piston Type Hydraulic

Drive type:

2 Electric motor pump station or 1 Electric motor pump station + shaft driven pump.

Ratio Torque:

10-400 kNm



Windlass

Drive Type: Electric and Hydraulic

Working Load: 5-110 kN

Dia. of Chain: 14-60mm



Winch

Drive Type: Electric and Hydraulic

Working Load: 10-400 kN



Product Name	Gear Oil Pump	Water Centrifugal Pump	Belt Pulley Oil Pump
Caliber Range	20-150mm	15-500mm	15-80mm
Capacity Range	1.08-150m ³ /h	1.1-1450m ³ /h	21-455L/min
Pressure Range	0.3-2.5Mpa	-	
Head Range	-	7-155m	10-15m
Power Range	0.75-150kW	0.18-160kW	0.2-5.5kW
Max Temperature	300°C	120°C	180°C
Driven Way	Electrical Motor, Diesel Engine	Electrical Motor	Electrical Motor Belt Pulley
Material	Cast Iron, Stainless Steel	Cast Iron, Stainless Steel, Bronze	Cast Iron, Stainless Steel, Bronze



Product Name	Water Centrifugal Pump	Split Case Pump	Fire pump
Caliber Range	15-500mm	80-1200mm	50-1200mm
Capacity Range	1.1-1450m ³ /h	80-19440m ³ /h	70-19000m ³ /h
Pressure Range	-	-	-
Head Range	7-155m	10-228m	17-60m
Power Range	0.18-160kW	22-2500kW	20~1600kW
Max Temperature	120°C	120°C	120°C
Driven Way	Electrical Motor	Electrical Motor, Diesel Engine	Diesel Engine
Material	Cast Iron, Stainless Steel, Bronze	Cast Iron, Stainless Steel	Cast Iron, Stainless Steel, Bronze



Product Name	Thermal Oil Pump	Lobe Pump	Diaphragm pump
Caliber Range	25-150mm	25-150mm	10-100mm
Capacity Range	4.5-400m ³ /h	0.2-600m ³ /h	0-70m ³ /h
Pressure Range	-	-	-
Head Range	15-135m	60-250mm	0-70m
Power Range	0.75-132kW	0.75-90kW	-
Max Temperature	400°C	370°C	150°C
Driven Way	Electrical Motor, Diesel Engine	Electrical Motor, Diesel Engine	Air Driven
Material	Cast Steel, Stainless Steel	Cast Iron, Stainless Steel	Cast Iron, Stainless Steel, PP, Aluminium, PTFE Lined



MANUAL PLASMA CUTTING INVERTER



Model	Cutmaster® 12 mm	Cutmaster® 20 mm	Cutmaster® 25 mm	Cutmaster® 35 mm
Genuine (TRUE) Cut	12 mm	20 mm	20 mm	35 mm
Severance Cut	15 mm	32 mm	38 mm	45 mm
Piercing Rating	6 mm	12 mm	15 mm	20 mm
Supply Voltage	240V	415V	415V	415V
Min. Recomend Generator	5 kVa	12 kVa	15 kVa	15 kVa
Max. Output Current	40 Amps @40%	60 Amps @40%	80 Amps @40%	100 Amps @40%

ULTRA-CUT® XT SYSTEM



Model	Ultra-Cut® 100 XT	Ultra-Cut® 200 XT	Ultra-Cut® 300 XT	Ultra-Cut® 400 XT
Rated Output	100 Amps	200 Amps	300 Amps	400 Amps
Output Range	5 - 100 Amps	5 - 200 Amps	5 - 300 Amps	5 - 400 Amps
Input Volts (Volts, Phase, Hertz)	380 V, 3 ph, 50-60 Hz 400 V, 3 ph, 50-60 Hz 480 V, 3 ph, 50-60 Hz	380 V, 3 ph, 50-60 Hz 400 V, 3 ph, 50-60 Hz 480 V, 3 ph, 50-60 Hz	380 V, 3 ph, 50-60 Hz 400 V, 3 ph, 50-60 Hz 480 V, 3 ph, 50-60 Hz	380 V, 3 ph, 50-60 Hz 400 V, 3 ph, 50-60 Hz 480 V, 3 ph, 50-60 Hz
Power Supply Weight	186 kg	205 kg	244 kg	252 kg



ARMADA



HOBBY



INVERMIG

Hobby Series

Model	Input Voltage (V)	Input Current (A)	Rated Output at 20 degree (A)	Rated Output at 40 degree (A)	Electrode (mm)	Weight (kg)
Hobby 140	220	25	60% @ 140	20% @ 140	1.6-4.0	2.7
Hobby 160	220	30	60% @ 160	20% @ 160	1.6-4.0	2.7
Hobby 180	220	36	35% @ 180	10% @ 180	1.6-5.0	3.0
Hobby 200	220	40	35% @ 200	10% @ 200	1.6-5.0	3.0

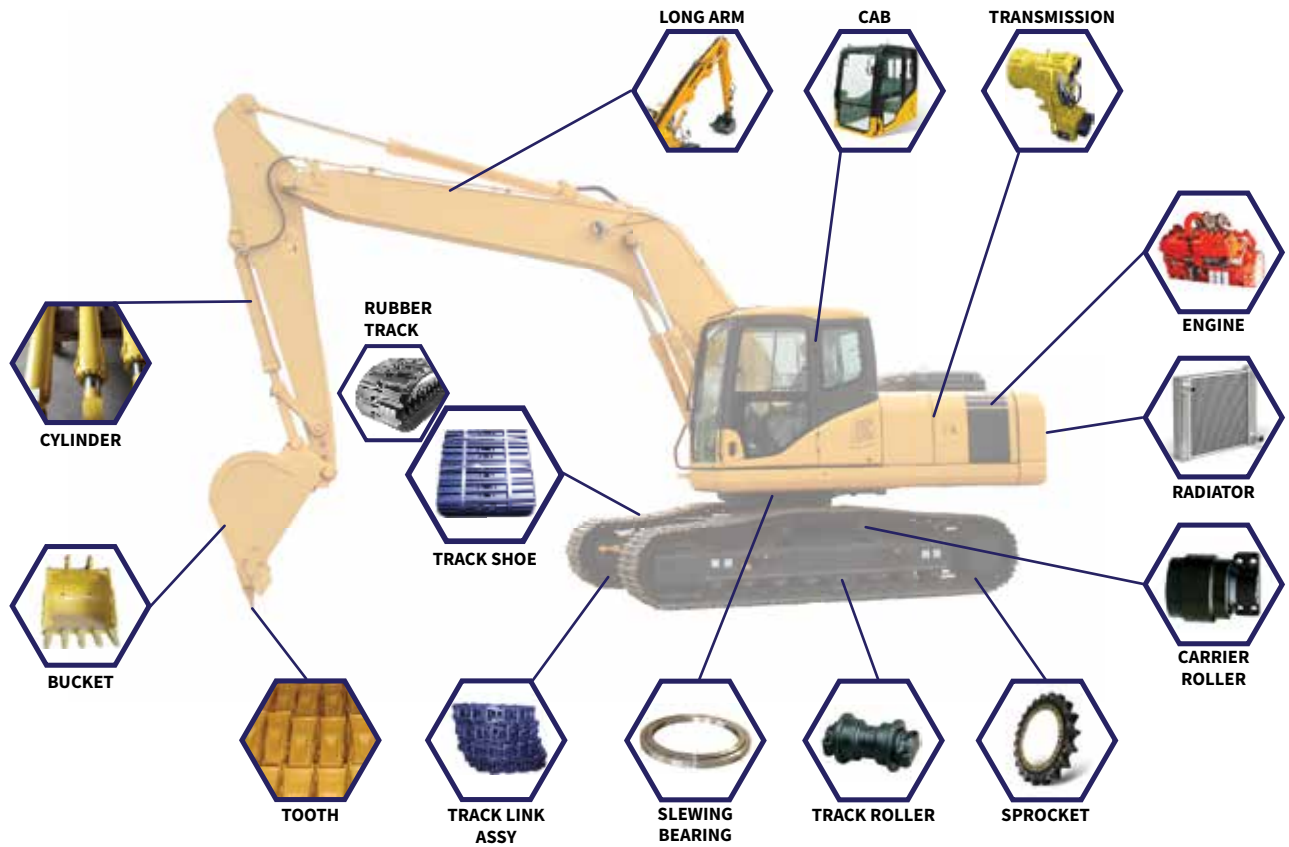
Armada Series

Model	Input Power (V)	Rated Input Current (A)	Welding Current Adjustment Range (A)	Rated Output (A)	Weight (kg)	Welding Speed (m/h)
Armada-630N	400	56	60-630	100%@630	57	10-130
Armada-1000N	400	81	90-1000	100%@1000	100	10-130
Armada-1250N	400	106	90-1250	100%@1250	105	10-130

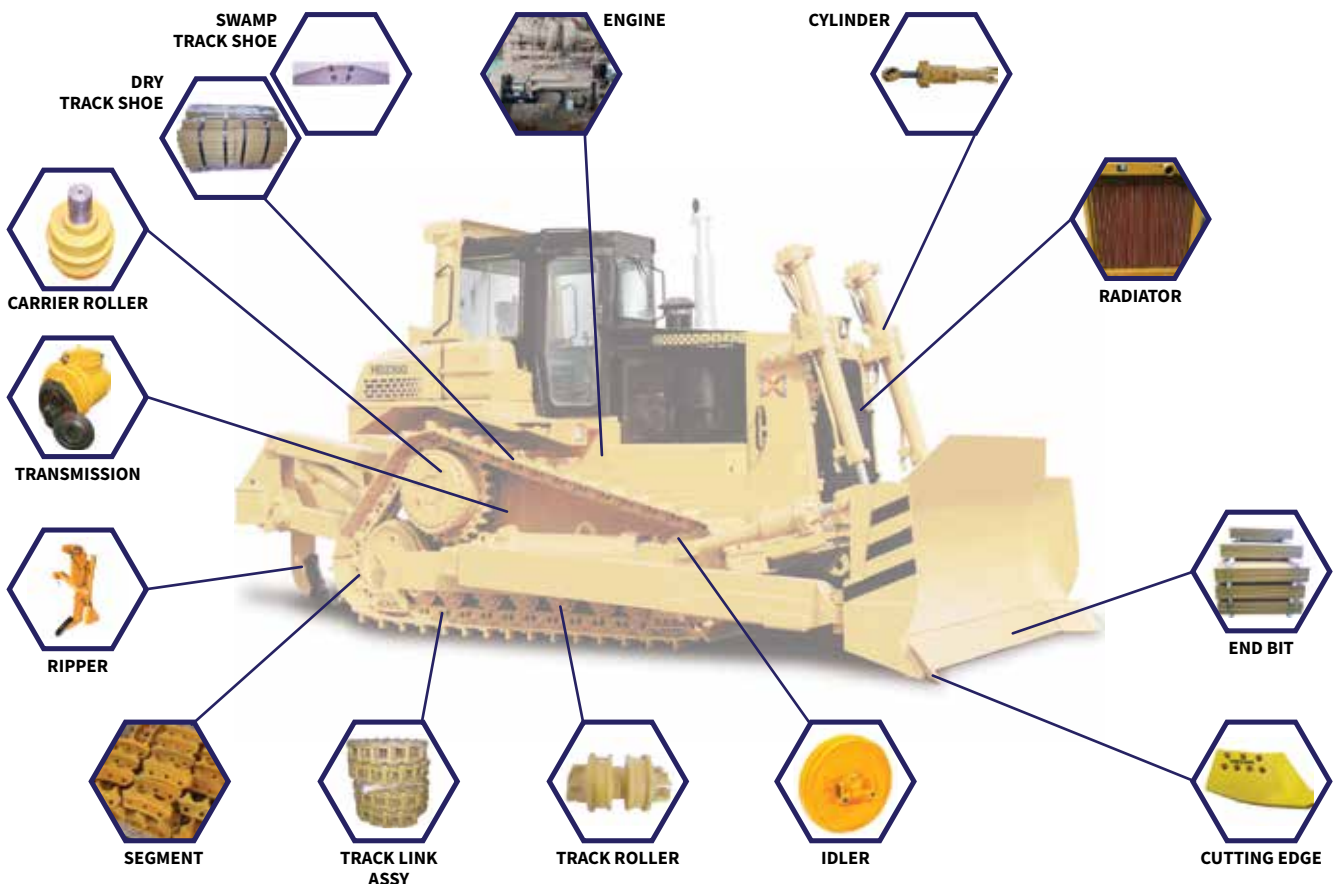
Invermig

Model	Function	Input Power (V/Hz)	Max Input Current (A)	Input Power (kVA)	OCV (V)	Gross Weight (kg)
Invermig 350	MMA/ MIG/ MAG	380V 50/60Hz	25.5	16.8	60	45
Invermig 500	MMA/ MIG/ MAG	380V 50/60Hz	41.8	27.5	70	45

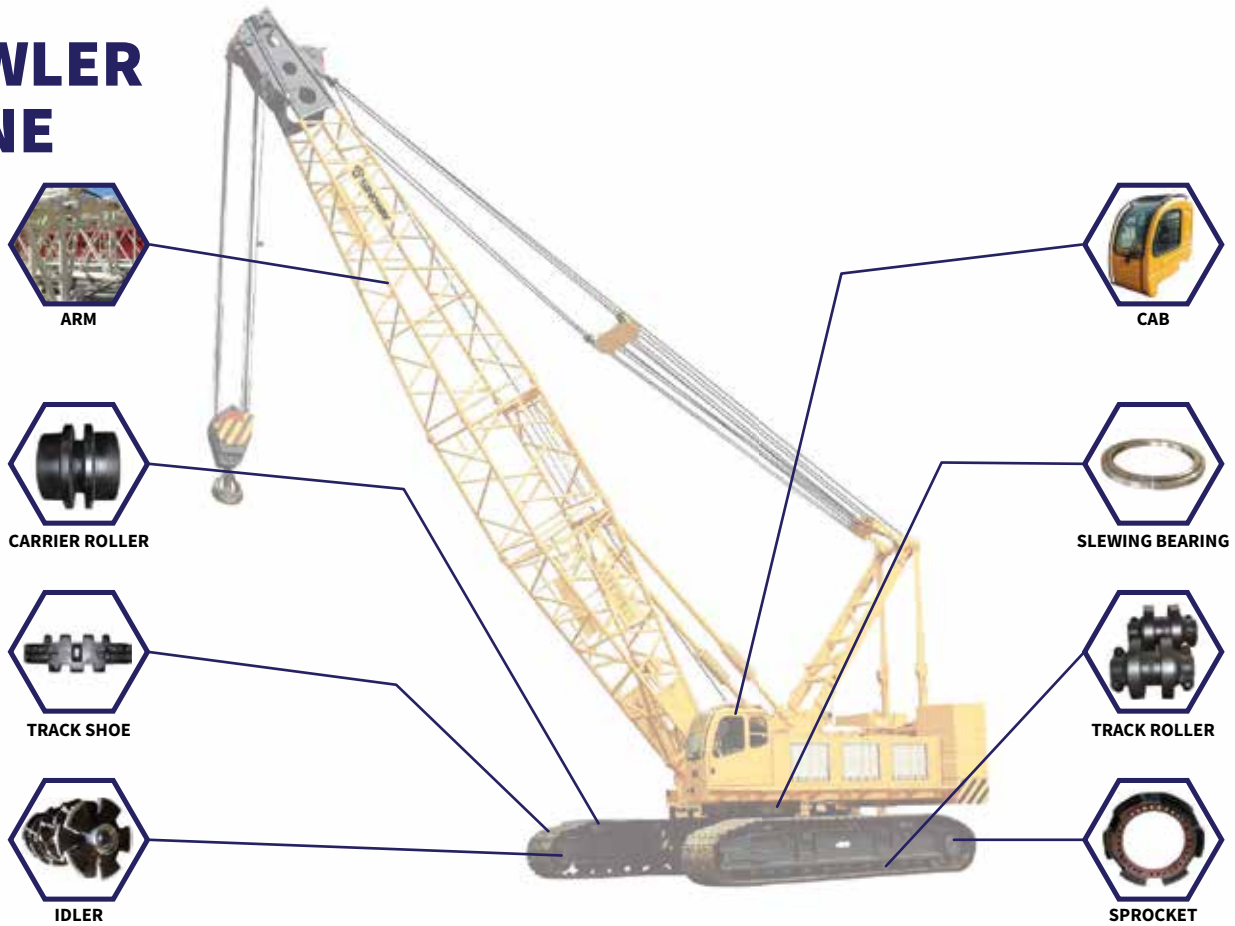
EXCAVATOR



BULLDOZER



CRAWLER CRANE



CONSTRUCTION MACHINERY ATTACHMENTS



Hydraulic Breaker
Mining exploitation, metallic equipment basic removing, tunnel drivage, land and bridge breaking, highway repairing, concrete road breaking, old building removing, reinforced concrete breaking, ship body mussel cleaning, dust cleaning, ice breaking and frozen soil breaking etc.



Quick Coupler
Hydraulic Coupler and mechanical coupler
Function: Convenient to replace excavator accessory hydraulic breaker, hydraulic cutter, bucket, ripper etc; And extend excavator operating area, save time and enhance working efficiency.

Feature: convenient, practical and low cost



Hydraulic Grabber
Function: Gripping wood, pipe, garden, stone and salvage.
Feature: 360° rotation, convenient operation



Hydraulic Compactor
Function: Road, railway, port, building, water conservancy, civism infrastructure construction and maintenance
Feature: Imported original hydraulic vibrating motor with big swing, good impact and compaction effects. Imported cylindrical bearing with low noise

Training & Product Knowledge:

- Conduct a training and product knowledge on how to operate the product of PT. XCMG
- Providing product installation and services for every product based on time determined by each product.

After Sales Service:

- Perform final inspection before delivery.
- Giving all information and manual instruction to customer before product/order is delivered.
- We only provide the original spare parts and best aftersales services.
- Providing 1-3 years warranty for every new and special units.
- Providing 4 times maintenance visit in 1 year for all the latest products.
- Providing 1 x 24 hours service.
- Spare parts in stock and available anytime.
- Supported by excellent Aftersales Service Team that will give you best assistance.



We are Supplier for Sales, Service, and Spare Parts of:

Heavy Equipments	: Crawler Crane Wheel Loader Bulldozer	: Truck Crane Excavator Air Compressor	: Tower Crane Forklift Undercarrige Parts	: Truck Mounted Crane Lift Boom Platform etc.
Marine Equipments	: Marine Generator Sterring Gear Slewing Crane	: Control Panel Towing Hook Lifeboat	: Marine Pump Windlass Capstan	: Anchor Winch etc.
Industrial Equipments	: Welding Machine Bending Machine Overhead Crane	: Generator (Genset) Shearing Machine Frequency Converter	: Rubber Fender CNC Cutting Machine Launching Airbag	: Pneumatic Fender Pressure Cleaning Machine etc.

SALES

SERVICE

SPARE PART



SHANTUI



PT. XUZHOU CONSTRUCTION MACHINERY GROUP

Heavy Equipment | Industrial Equipment | Marine Equipment



+62 778 410 2223



+62 778 410 2225



info@pt-xcmg.com



pt-xcmg.com



Hengky Zhang (+62 811 700 2223 | hengky@pt-xcmg.com)



Complex Kara Industrial Park
Blok E No. 5, Batam Center, Batam 29432
Kepulauan Riau – Indonesia